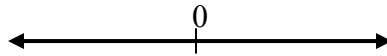


**Pre Calculus
I.1 Homework**

Name:
Date:

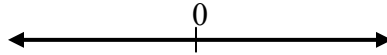
Put in interval notation **AND** draw a graph of each inequality.

1. $x \geq 4$



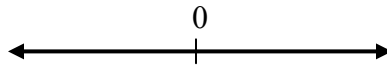
1. _____

2. $x < 6$



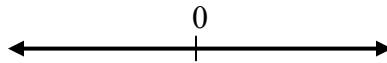
2. _____

3. $x \leq -2$



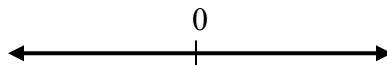
3. _____

4. $x > 8$



4. _____

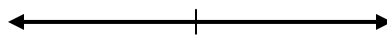
5. $x < -10$



5. _____

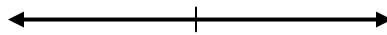
Write each interval as an inequality, and draw a graph for each.

6. $(-\infty, -8]$



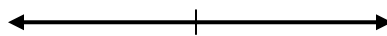
6. _____

7. $[5, \infty)$



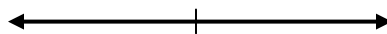
7. _____

8. $(-2, \infty)$



8. _____

9. $[-10, \infty)$



9. _____

10. $(-\infty, 6)$



10. _____

For each number line, write the given set of numbers in interval notation.

1.



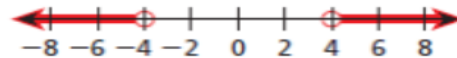
2.



3.



4.



5.

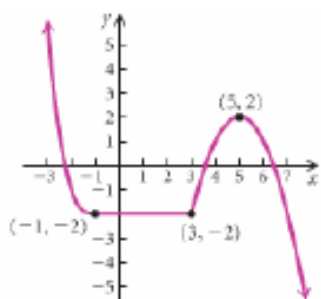


6.

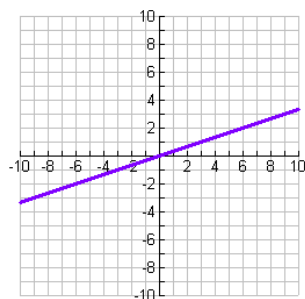


Name the domain and range of each relation using interval notation.

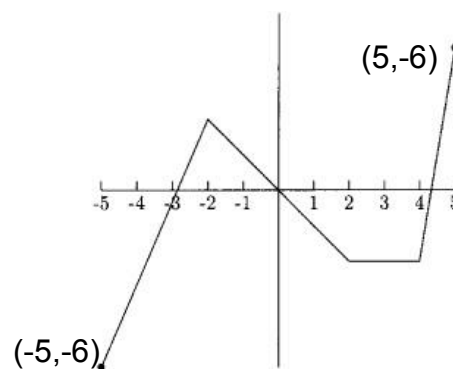
1.



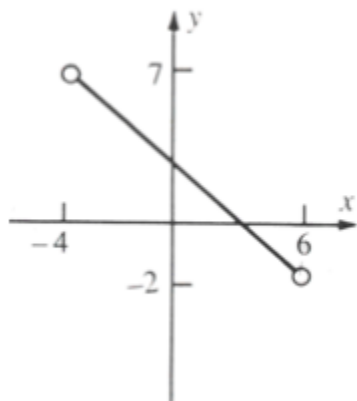
2.



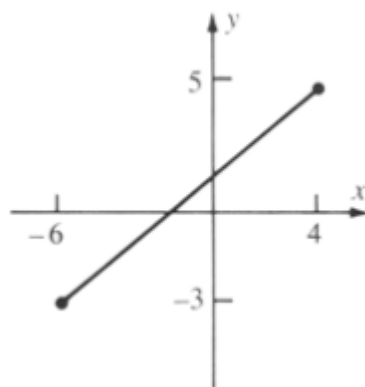
3.



4.



5.



6.

